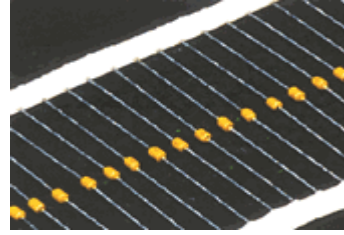


MULTILAYER CERAMIC CAPACITORS

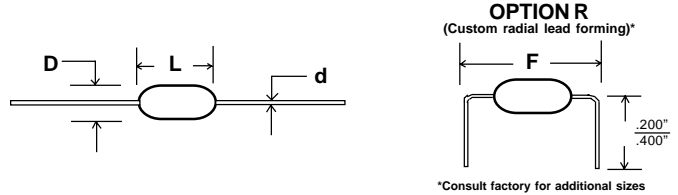
AXIAL LEADS, MINIATURE

CEA SERIES



FEATURES

- ☐ Conformal coated and miniature size
- ☐ Wide range of capacitance, tolerance, TC, and voltage
- ☐ Axial leaded for thru-hole placement
- ☐ COG (NPO), X7R, Z5U and Y5V temperature coefficients
- ☐ Tape and reel and ammo packaging
- ☐ Industry standard sizes
- ☐ Increased voltage ratings available
- ☐ Radial style (CER Series) available



DIMENSIONS

Size	L (Length)	D (Diameter)	F ±.025 [.63]	d (Lead Dia)	Lead Length
CEA05	0.149±.028 [3.8±.7]	.098±0.032 [2.5±.81]	0.2 [5.08]	.018±.003 [0.45±.08]	1.06 Min. [27]
CEA10	0.169±.028 [4.3±.7]	.098±0.032 [2.5±.81]	0.2 [5.08]	.02±.003 [0.5±.08]	1.06 Min. [27]
CEA12	0.2±.028 [5.1±.7]	.118±0.032 [3.0±.81]	0.295 [7.5]	.02±.003 [0.5±.08]	1.06 Min. [27]

PERFORMANCE CHARACTERISTICS

CHARACTERISTICS	COG (NPO)	X7R	Z5U/Y5V
Capacitance Range	1 pF - 4,700 pF	100 pF - 220,000 pF	2,200 pF - 1,200,000 pF
Capacitance Tolerance	±1%(F), ±2%(G), ±5%(J), ±10%(K)	±5%(J), ±10%(K), ±20%(M)	±20%(M) TO +80 - 20%(Z)
Operating Temperature Range	-55°C TO +125°C	-55°C TO +125°C	(Z5U) +10°C TO +85°C (Y5V) -30°C TO +85°C
Temperature Characteristics	0 ± 30ppm/°C	±15% (0Vdc)	(Z5U) +22%, -56% (Y5V) +22%, -82%
Voltage Rating	50, 100 & 200Vdc	50, 100 & 200Vdc	50 & 100Vdc
Dissipation Factor	0.15% Max. (+25°C & +125°C) For values greater than 30pf. For values of 30pf and below: Q = 20 X C + 400 1.0VRMS, 1MHz for values > 100pF	2.5% Max. at 1KHz, 1VRMS Max.	4.0% Max. at 1KHz, 5 VRMS Max.
Insulation Resistance 25°C (MIL-STD-202-METHOD-302)	100K Meg Ohms or 1000 Meg Ohms-uF Min. Whichever is less	100K Meg Ohms or 1000 Meg Ohms-uF Min. Whichever is less	100K Meg Ohms or 1000 Meg Ohms-uF Min. Whichever is less
Dielectric Strength	250% of rated Vdc	250% of rated Vdc	250% of rated Vdc
Life Test (1000 hours)	200% of rated voltage at +125°C	200% of rated voltage at +125°C	150% of rated voltage at +85°C

SPECIFICATIONS

SIZE	WVDC	CAPACITANCE RANGE (pF)		
		COG (NPO)	X7R	Z5U/Y5V
CEA05	25	0.5 - 1000	100 - 33,000	2,200 - 220,000
	50	0.5 - 820	100 - 22,000	2,200 - 150,000
	100	0.5 - 560	100 - 4,700	- -
CEA10	25	0.5 - 3300	330 - 100,000	10,000 - 1,000,000
	50	150 - 820	330 - 47,000	10,000 - 680,000
	100	1000 - 1200	330 - 22,000	- -
CEA12	25	0.5 - 4,700	1,000 - 220,000	10,000 - 1,200,000
	50	0.5 - 3,900	1,000 - 100,000	10,000 - 1,000,000
	100	0.5 - 1,500	1,000 - 68,000	- -

SIZE	STANDARD PACKAGING		
	T/R	Ammo	Bulk
CEA05	5000	5000	1000
CEA10	5000	5000	1000
CEA12	2500	2500	500

P/N DESIGNATION: CEA 10 - 102 - K 050 R T52

RCDD Type _____

Body Size: 05,10,12 _____

Option Code: R (Radial Lead Form)* _____

3-Digit Capacitance Code in pF: 2 significant digits and multiplier (1R0=1pF, 100=10pF, 101=100pF, 103=10,000pF)

Tolerance: F=1%, G=2%, J=5%, K=10%, M=20%, Z=+80%/-20%, B=±0.1pF, C=±0.25pF, D=±0.5pF

3-Digit Voltage Code: 050=50, 101=100, 201=200

Temperature Characteristic: G=COG, R=X7R, U=Z5U, V=Y5V _____

Packaging: B=Bulk, A=Ammo, T=Tape & Reel (T&R code: For 26 mm= 26, 52.4mm= 52)

* OPTION R: Custom radial lead forming is available for all sizes. Consult factory for additional lead spacings.