

HIGH POWER INDUCTORS

SURFACE MOUNT, UP TO 8.0 AMPS

HI 500 SERIES



FEATURES

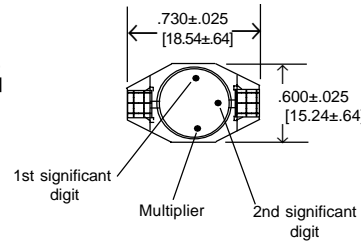
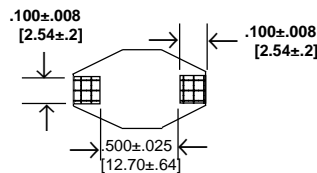
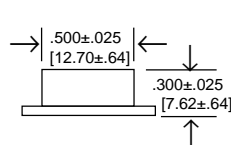
- Magnetically shielded construction
- True surface mount design
- Wide inductance range
- Cost effective high performance
- Low DC resistance
- High power-to-size ratio
- Low profile and small footprint

OPTIONS

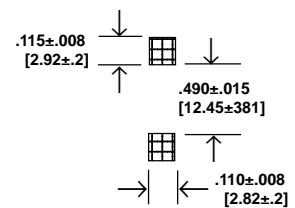
- Option ER - 100 hour stabilization burn-in
- Testing at high frequency
- Option '63' - polarity identification
- Non-standard - custom versions available

RCD's new HI 500 Series power inductors are specifically designed for higher current surface mount applications requiring magnetic shielding. Featuring saturation current ratings as high as 8.0 Amps, and low DC resistance makes it especially suited for a wide variety of applications including; board mounted DC-DC converters, miniature power supplies, and voltage multiplying circuits, and a host of high power applications where space is at a premium.

DIMENSIONS



Mounting Pads



SPECIFICATIONS

RCD P/N	Inductance (μH±20%)	DCR (Ω ±15%)	SRF typ (MHz)	Isat ² (A)	Isrms ³ (A)
HI500-100-KT	10.0	.040	30	8.0	3.9
HI500-150-KT	15.0	.048	20	7.0	3.4
HI500-220-KT	22.0	.059	18	6.0	3.1
HI500-330-KT	33.0	.075	14	5.0	2.8
HI500-470-KT	47.0	.097	10	4.0	2.4
HI500-680-KT	68.0	.138	9	3.0	2.0
HI500-101-KT	100	.207	7	2.4	1.7
HI500-151-KT	150	.293	6	2.1	1.3
HI500-221-KT	220	.470	5	1.9	1.1
HI500-331-KT	330	.780	4	1.1	0.86
HI500-471-KT	470	1.08	3	1.1	0.73
HI500-681-KT	680	1.40	2.5	0.96	0.64
HI500-102-KT	1000	2.01	2	0.80	0.53

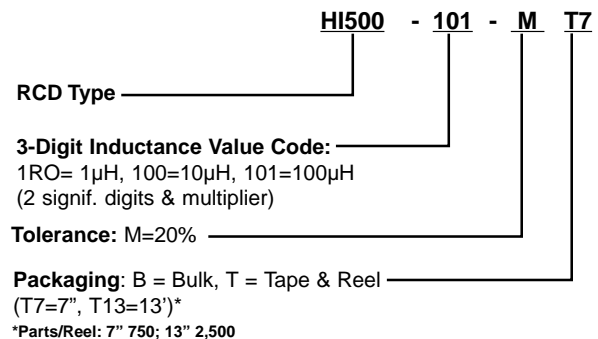
* NOTES:

1. Tested at 100kHz, 0.1 Vrms
2. Inductance drop 10% typical at Isat
3. 40° rise typical at Isrms
4. Operating temperature range -40° C to +85° C
5. Electrical specifications @ 25° C

TYPICAL PERFORMANCE CHARACTERISTICS

Temperature Rise	40°C Max
Rated Current	Based on temperature rise and DeltaL/LOA = 10% Typ.
Storage Temp. Range	-40°C to +125°C
Operating Temp. Range	-25°C to +85°C
Resistance to Solder Heat	260°C, 10 Seconds
Resistance to Solvents	per MIL-STD-202

P/N DESIGNATION:



RCD Components Inc., 520 E. Industrial Park Dr., Manchester, NH USA 03109

Tel: (603) 669-0054 Fax: (603) 669-5455 E-mail: sales@rcdcomponents.com www.rcdcomponents.com

FAXXX specifications are subject to change without notice.